

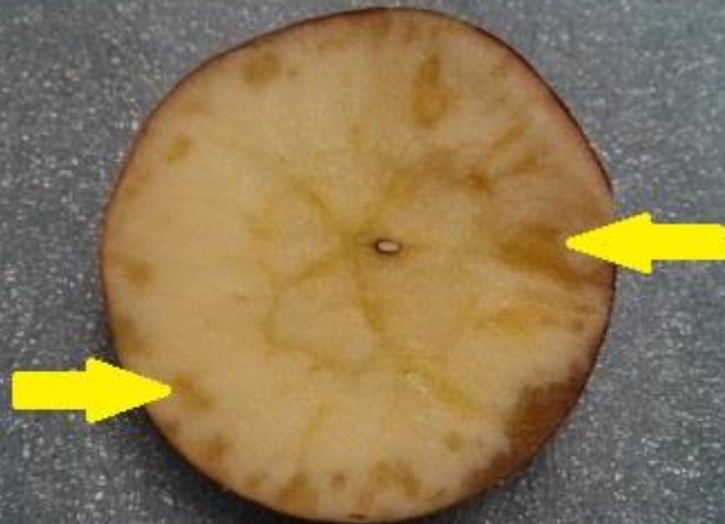
**Damage
by
Watercore**



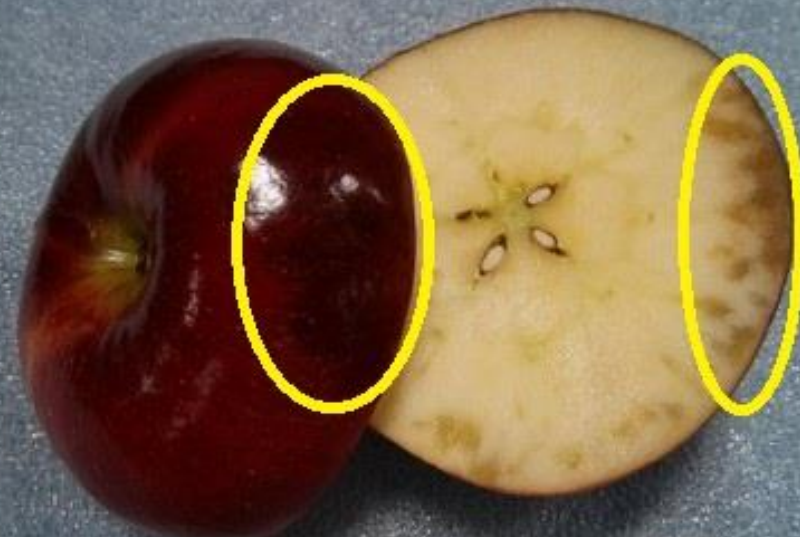
When 3 or more vascular bundles meet or coalesce



When extending from the core to a vascular bundle



When more than slight outside the vascular bundles

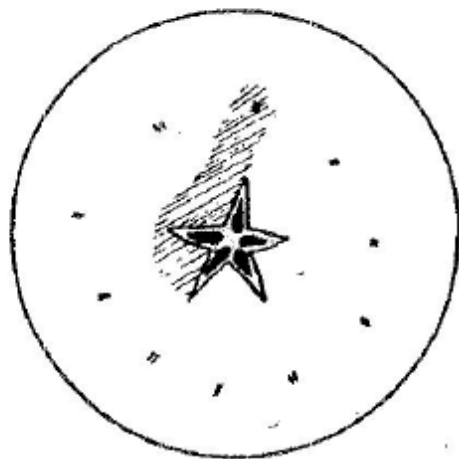


Any amount that is visible externally

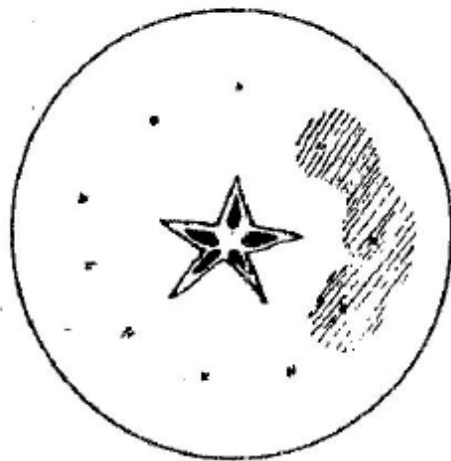
Watercore scoring guidelines - Safeway
(also for USDA - after Jan. 31 for reds)

Damage by Invisible Watercore

1. When existing around core and extending to watercore in vascular bundles.



2. When surrounding vascular bundles when affected areas around three or more bundles meet or coalesce.



3. When more than slight degree outside circular area formed by vascular bundles.

