


# Top Depot Approved Temp Recorders

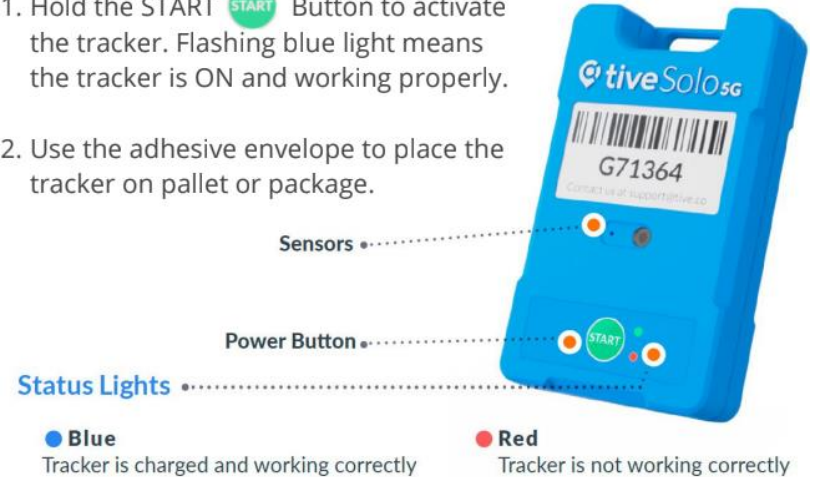


# TIVE (current preferred)

## TIVE Solo 5G

- Adhesive Backing
- Easy accessibility
  - Power button
  - LED Status Lights
  - CTMS (Costcotraffic.com)
- Real-time tracking
- GPS availability in container/trailer
- All boxes come with prepaid return labels
- \$19.95/u - Rates depend on return rate of 80%
- Road/Ocean/Air/Rail
- IP67 / non-lithium - lithium options

1. Hold the START  Button to activate the tracker. Flashing blue light means the tracker is ON and working properly.
2. Use the adhesive envelope to place the tracker on pallet or package.



# TIVE (cont.)

Depot #: 1053, Trailer #/Container #: 18014, Load Date: 02/23/22

Tive Device Number	Device ID	Tracking	BDI	Load#	PO Number	Door Number	Status	Edit	Seal #	Temp	Item #	Commodity	Cases/Pallet	Actual Case Count	Units Removed for Quality Control	Pallet Count	Total PO Pallets	Actual Weight	
NB4305	NB4305	Track		2108206	010530216302	385	COMPLETED	Edit	52915143	35	25949	GARLIC 907 G / 2 LB	35	280		8	8	9240	
NB4305	NB4305	Track		2108206	010530209402	385	COMPLETED	Edit	52915143	35	94676	ASPARAGUS 1 KG / 2.25 LB	49	637		13	13	14906.06	
NB4305	NB4305	Track		2108206	010530216301	385	COMPLETED	Edit	52915143	35	25949	GARLIC 907 G / 2 LB	35	175		5	22	5512.5	
				Count Distinct: 1	Count: 3														
														1092	26	29658.56			

CTMS Capability / Tracking in CTMS

TIVE.com real-time tracking

● 2108206

In transit to: 5236 INTERCOASTAL DR., MD, MONROVIA, 21770, US  
Updated 38 minutes ago

Feb 26, 2022  
08:26:51 AM (38 minutes ago)

Location  
3717 South Houseman Street, Terre Haute, Indiana 47802, United States

Shipment Data

Distance to Destination (miles)  
~632

Estimated Time Remaining  
11h

Sensors  
Temperature (°F)  
34.50

Humidity (%)  
50.20

Shipment Details  
Load #: 2108206

Alarm Events  
no data found

Tive Location Info

Data Received (PST)	Reading Time(UTC-8)	Location	Latitude	Longitude	Location Method	Temperature	Humidity	Light
02/26/22 08:16:39	02/26/22 06:59:09	1342 North 100 Street, Mulberry Grove, Illinois 62262, United States	38.93565	-89.22887	cell	34.29	50.4	0
02/26/22 07:16:36	02/26/22 05:59:09	11201 Illinois 143, Marine, Illinois 62061, United States	38.77732	-89.74128	cell	34.97	50.2	0
02/26/22 06:16:32	02/26/22 04:57:45	11201 Illinois 143, Marine, Illinois 62061, United States	38.77732	-89.74128	cell	34.8	49.8	0
02/26/22 05:16:30	02/26/22 03:59:09	11201 Illinois 143, Marine, Illinois 62061, United States	38.77732	-89.74128	cell	34.4	50.4	0
02/26/22 04:16:28	02/26/22 02:58:44	11201 Illinois 143, Marine, Illinois 62061, United States	38.77732	-89.74128	cell	34.04	50.4	0
02/26/22 03:16:50	02/26/22 02:56:50	1803 California Avenue, St. Louis, Missouri 63104, United States	38.61413	-90.22629	wifi	33.84	50	0
02/26/22 02:16:44	02/26/22 02:56:50	987 South Service Road West, Sullivan, Missouri 63080, United States	38.21937	-91.16217	wifi	34.04	49.7	0
02/26/22 01:16:49	02/25/22 23:56:52	1008 U.S. Route 66, Warramsville, Missouri 65583, United States	37.81613	-92.21698	cell	34.85	49	0
02/26/22 00:16:36	02/25/22 22:59:08	421 East Old Route 66, Strafford, Missouri 65757, United States	37.27098	-93.10729	cell	34.12	49.7	0
02/25/22 23:16:36	02/25/22 21:56:50	2815 North Glenstone Avenue, Springfield, Missouri 65803, United States	37.24777	-92.26212	wifi	34.42	49.3	0
02/25/22 22:17:00	02/25/22 20:59:08	2582 High Street, Sarcoxe, Missouri 64862, United States	37.07594	-94.10372	cell	34.48	49.8	0
02/25/22 21:16:52	02/25/22 19:59:08	438598 East 290 Road, Vinita, Oklahoma 74331, United States	36.60031	-95.18827	cell	34.5	49.2	0
02/25/22 20:16:45	02/25/22 18:59:08	10714 South Sycamore Street, Jenks, Oklahoma 74037, United States	36.00764	-95.99809	cell	34.57	49.2	0
02/25/22 19:16:38	02/25/22 17:56:50	22714 Northeast 178th Street, Luthie, Oklahoma 73054, United States	35.64951	-97.14952	cell	34.37	49.8	0
02/25/22 18:16:34	02/25/22 16:59:08	136-149 South Heaton Road, El Reno, Oklahoma 73036, United States	35.52701	-98.07945	cell	34.85	49	0

1 - 15 More

Location Map

Map Satellite

Denver United States

Las Vegas Phoenix Tucson Dallas Austin

Indianapolis Nashville Charlotte Atlanta

Washington

Google Keyboard shortcuts Map data ©2022 Google, Imagery ©2022 Google, Terms of Use

United States

San Francisco Las Vegas Phoenix Tucson Dallas Austin

Indianapolis Nashville Charlotte Atlanta

Washington

# Option 1

## Flashlink RTL Prime 3G

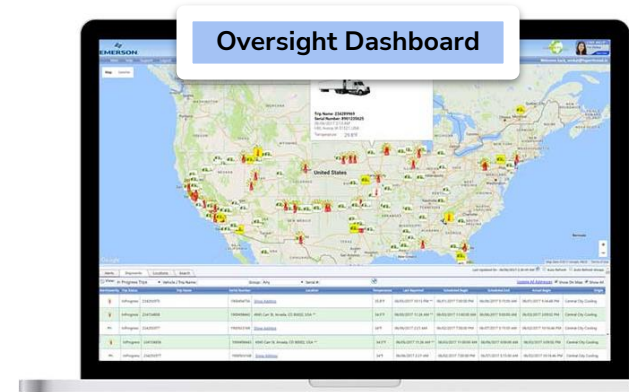
- Adhesive strips / single-use
- Easy accessibility
  - Power button
  - LED Status Lights / Lithium bat.
- Cellular data / Real-time tracking
- No software/tools needed - ColdTrak web portal
- 24/7 cloud service on FlashTrak.com
- IP65
- Back-up USB/PDF logger feature



# Option 2

## Emerson GO 2G-N

- Single use
- Transmits data by cellular
- \*Non-lithium battery / IP54
- Automated reporting - oversight dashboard or app (ios / android)
- Reports temperature, security and location - alarm for temp/light
- Easy accessibility / pull-tab to activate
- Real-time tracking / alert notification



# Option 3

## Flashlink RTL Prime

- Real-time monitoring / single-use
- location , temp, and light monitoring
- high /low alarms
- Lithium battery / IP65
- Cellular data / cloud service
- ColdTrak web portal
- 15 day duration model 5 min intervals/ 60 day duration model 10 min intervals



# IP Rating Reference

Resistance to ingress, accidental or otherwise, by the user

Resistance to ingress from foreign bodies (dust, dirt, etc)

Resistance to moisture ingress

## First digit - protection from foreign body and particulate ingress

<b>0</b>	(or X - see section below): Not rated (or no rating supplied) for protection against ingress of this type.
<b>1</b>	Protection against solid objects larger than 50mm (accidental hand contact with open palm), but not against deliberate body contact.
<b>2</b>	Protection against solid objects larger than 12mm (accidental finger contact).
<b>3</b>	Protection against solid objects larger than 2.5mm (tools and wires).
<b>4</b>	Protection against solid objects larger than 1mm (fine tools and wires, nails, screws, larger insects and other potentially invasive small objects)
<b>5</b>	Partial protection against dust and other particulates, such that any ingress will not damage or impede the satisfactory performance of internal components.
<b>6</b>	Full protection against dust and other particulates, including a vacuum seal, tested against continuous airflow.

## Second digit - protection from moisture ingress:

<b>0</b>	(or X - see section below): Not rated (or no rating supplied) for protection against ingress of this type.
<b>1</b>	Protection against vertically falling droplets, such as condensation, sufficient that no damage or interrupted functioning of components will be incurred when an item is upright.
<b>2</b>	Protection against vertically dripping water when enclosure is tilted up to 15° off vertical.
<b>3</b>	Protection against direct moisture spray at angles up to 60° off vertical.
<b>4</b>	Protection against splashing water from any direction, tested for a minimum of 10 minutes with an oscillating spray (limited ingress permitted with no harmful effects).
<b>5</b>	Protection against low-pressure jets (6.3 mm) of directed water from any angle (limited ingress permitted with no harmful effects).
<b>6</b>	Protection against powerful jets (12.5 mm nozzle) of directed water from any direction.
<b>7</b>	Protection against full immersion for up to 30 minutes at depths between 15 cm and 1 metre (limited ingress permitted with no harmful effects).
<b>8</b>	Protection against extended immersion under higher pressure (i.e. greater depths). Precise parameters of this test will be set and advertised by the manufacturer and may include additional factors such as temperature fluctuations and flow rates, depending on equipment type.
<b>9K</b>	Protection against high-pressure, high-temperature jet sprays, wash-downs or steam-cleaning procedures - this rating is most often seen in specific road vehicle applications (standard ISO 20653:2013 Road Vehicles - Degrees of protection).